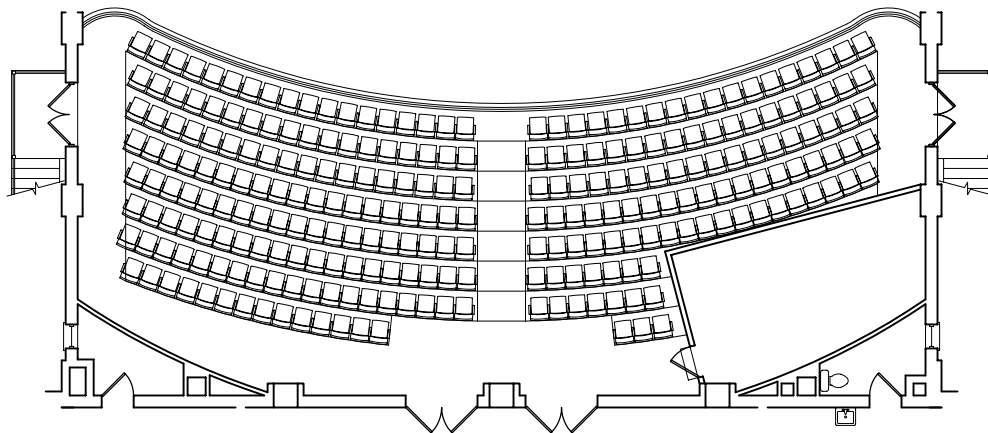


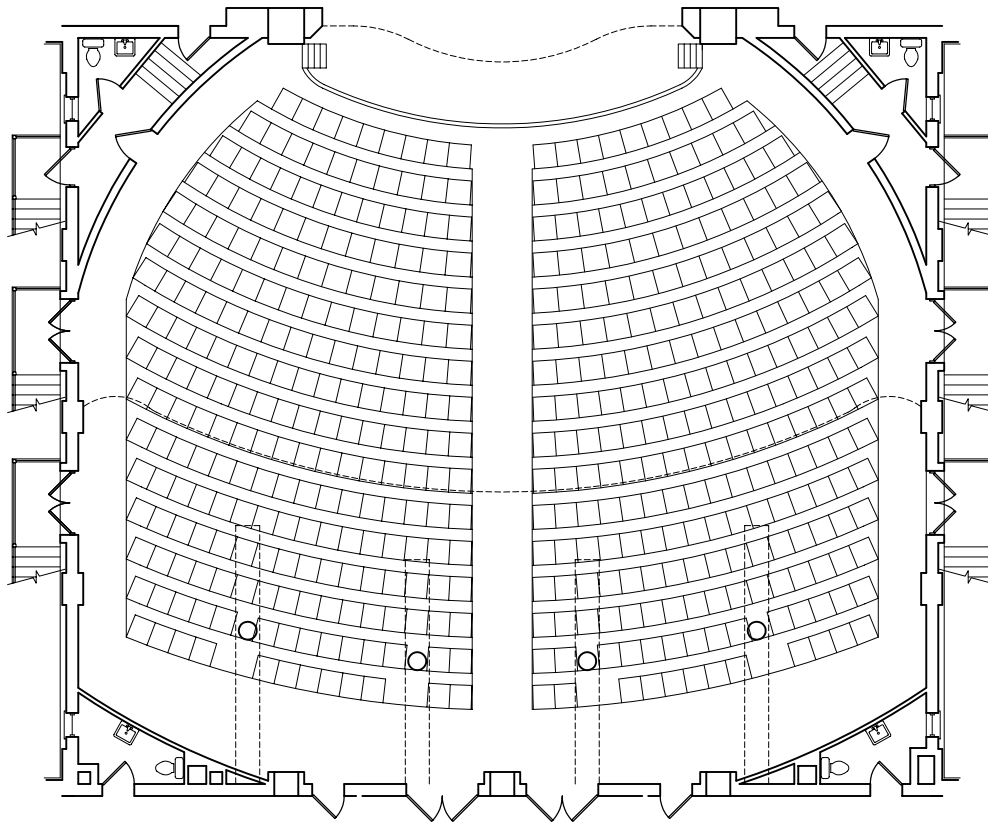

 Orchestra Level Seating – Existing  
 SCALE: 1/16"=1'-0"




 Balcony Level Seating – Existing  
 SCALE: 1/16"=1'-0"

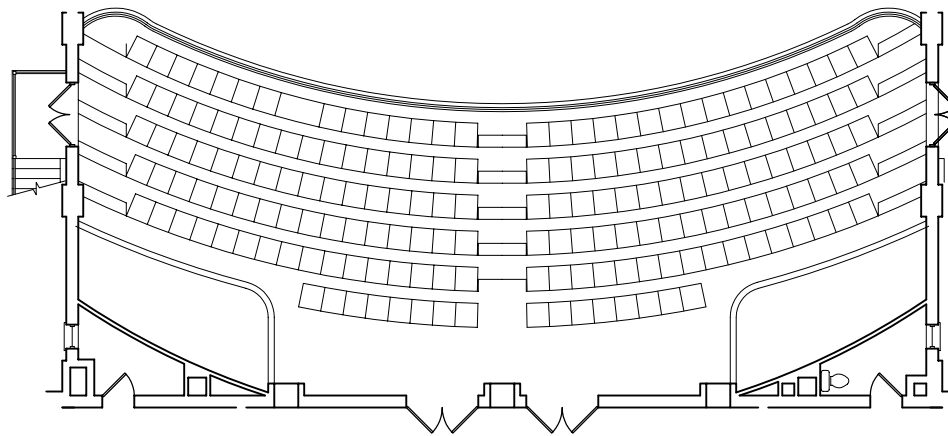
PROPOSED SEATING – EXISTING

ORCHESTRA LEVEL	616 SEATS
BALCONY LEVEL	253 SEATS
TOTAL	869 SEATS



Orchestra Level Seating - Option 1

SCALE: 1/16"=1'-0"

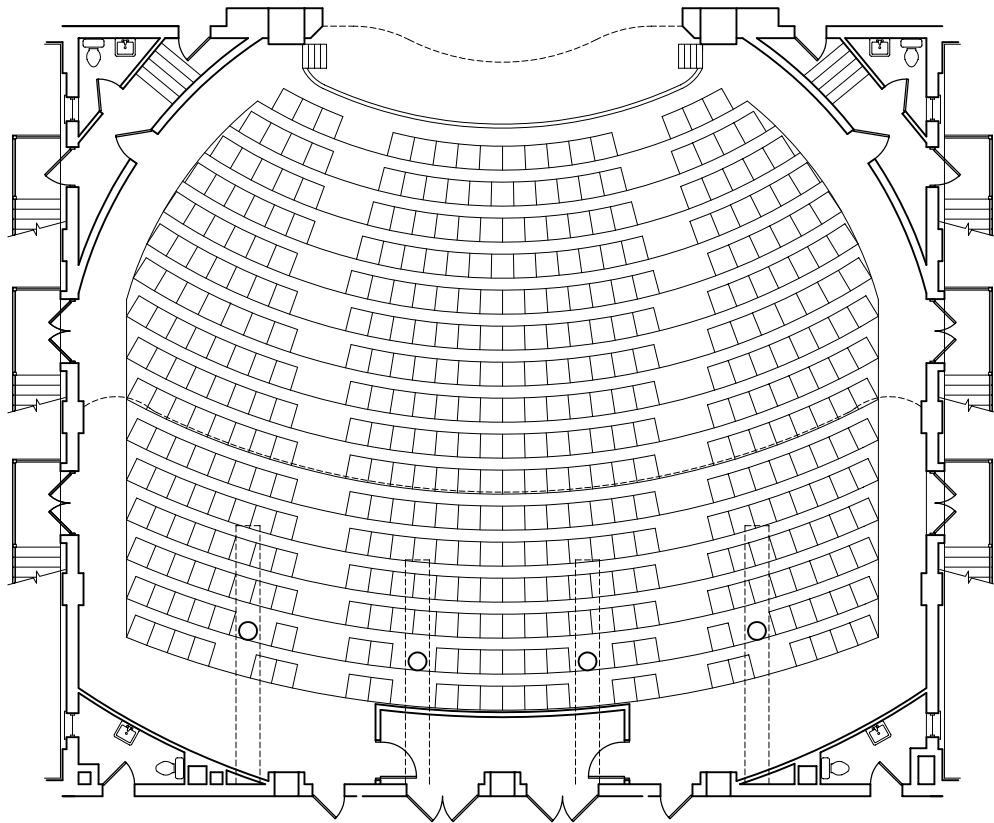


Balcony Level Seating - Option 1

SCALE: 1/16"=1'-0"

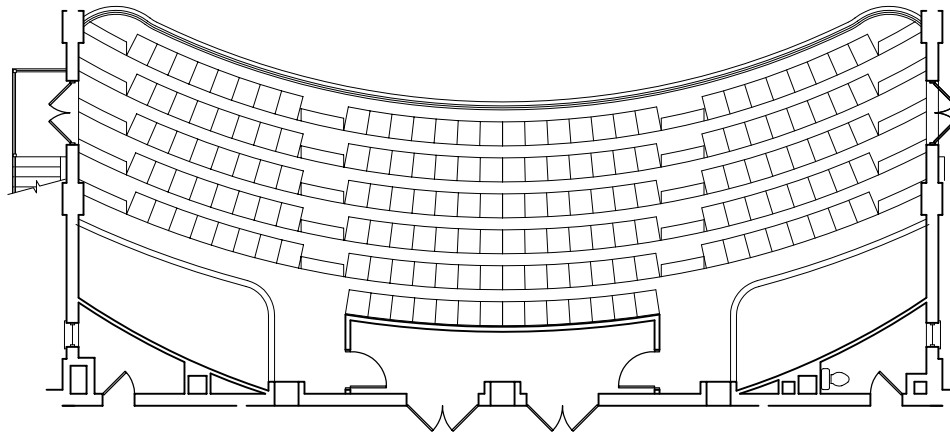
PROPOSED SEATING - OPTION 1

ORCHESTRA LEVEL	458 SEATS
BALCONY LEVEL	176 SEATS
TOTAL	634 SEATS



Orchestra Level Seating - Option 2

SCALE: 1/16"=1'-0"

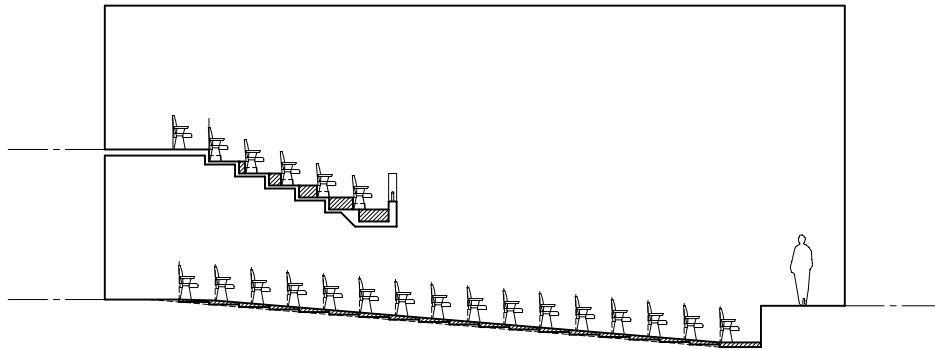


Balcony Level Seating - Option 2

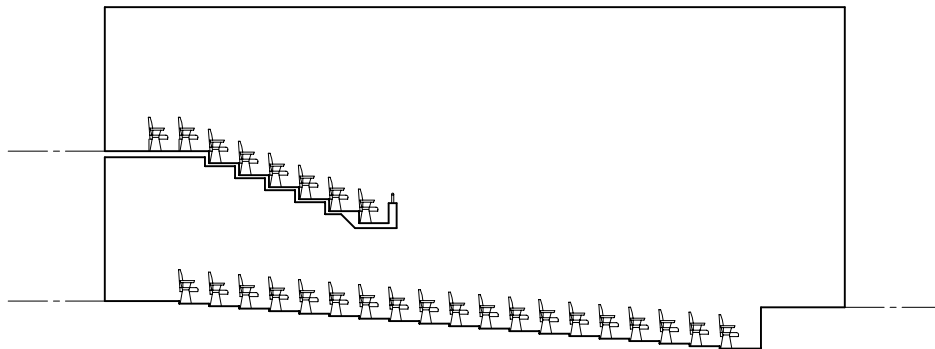
SCALE: 1/16"=1'-0"

PROPOSED SEATING - OPTION 2

ORCHESTRA LEVEL	418 SEATS
BALCONY LEVEL	164 SEATS
TOTAL	582 SEATS



○ Schematic House Section – Proposed  
SCALE: 1/16"=1'-0"



○ Schematic House Section – Existing  
SCALE: 1/16"=1'-0"